

The background of the entire image is a close-up, high-resolution photograph of a light-colored wood grain, likely pine. The grain patterns are organic and flowing, with some areas showing more pronounced concentric rings and others showing more linear textures. The lighting is soft and even, highlighting the natural texture of the wood.

NATURAL TOUCH OF PURE PINE

BY PINEART PRODUCTION

We all have a longing
hurrying to meet ourselves.
In a thrilling world, it is sometimes difficult.





The nature of Lapland has a magical ability to stop and calm down. We wanted to develop something that would resemble that peace. This led to the idea of a living room where it is easy to be.



We wanted to respect the beauty of nature by doing it the living rooms as organic as possible.

PURITY, SKILL AND GOOD FEELING

Pineart's living rooms are designed with their architecture and functionality to fit as well into the summer home as well as the courtyard of the town home. In addition, the modules can be interconnected and, if necessary, part of the building technology can be implemented as self-sufficient. Because of its modularity, the Pineart living rooms work brilliantly also as part of a natural holiday concept. Most of our living rooms are portable, so for example, an entire holiday village can always be moved to where it is most needed.

Long experience and solid wood expertise play a key role in product appearance and functionality. Our products have a strong hand print stamp in the small details. We manufacture finished buildings indoors for quality and finishing the election.

The main raw material for Pine products is the North Pure Pine, which, due to its toughness and strength, is ideal for construction. In addition, wood is a 100% renewable resource. In wood surface treatment we mainly use natural materials that do not give rise to chemical disadvantages.

The rugged, handcrafted look of the surfaces tells Pineart's line. Our hips are purity, skill and good feeling.



PINE LIVING ROOMS DO YOU GOOD

Pine reaches high and its top is beautifully upward. The same pattern language is repeated in all Pine living rooms: **Saunas**, **Chalets**, and **Hutts**. The log is stacked so that the room grows in width to the ceiling. This shape creates an interesting feeling of a very spacious space. Another important element is the large panoramic windows through which nature and light become part of the interior. In the living rooms you will experience peace of mind without hesitation, from the warm interior.



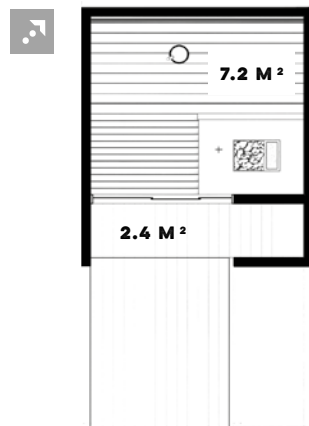
PINE SAUNA



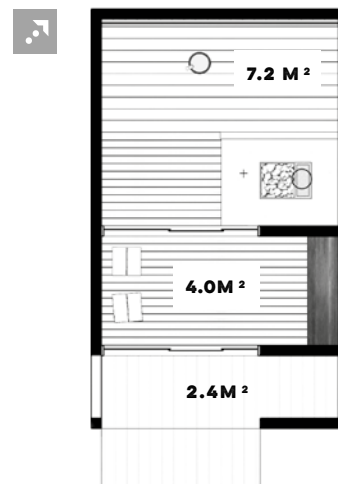
| The sauna is available in three different sizes and can be customized in many ways to suit your needs.



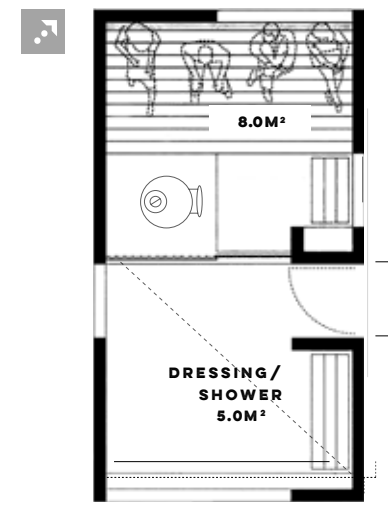
PINE SAUNA **(S)**



PINE SAUNA **(M)**



PINE SAUNA **(L)**



Large glass surfaces inside the sauna are exciting the opposite of rough, primordial wood. They like steam in the steam room, but they do not stop the flow of light. In addition to the glass walls, the saunas are equipped with a dressing room with glass roof, allowing the view of the sky and the light rays into sauna experience.

COLORS Natural, pitch, gray, tar

SUPPLY CONTENT Product always ready to use, terms of delivery

WILD EQUIPMENT Wood-heated heater with drain, with or without water heater, solar power plant, led lighting and 12 volt electrical system with battery, well

URBAN EQUIPMENT Stove with water pan or without a tailor-made 230-volt electric system, heating option, customized water system

ADDITIONAL ANALYSIS Artistic, placement, glass solutions, shower rooms, indoor flooring materials, project design and implementation, land works as well as establishing a service

WEIGHT 4-6 tons

MODULES Sauna, terrace, dressing room, sauna on the terrace, dressing room

PORTABILITY The saunas are portable

PINE CHALET **(S)**

Chalet S is ideally suited for relaxation or part of a wider area, alongside the sauna. Chalet is an ambience with a high-quality glass case and clear-cut lighting.

Uses:

- *Fireplace*
- *Part of the accommodation concept*
- *Along the sauna*



COLORS Natural, pitch, gray, tar

SUPPLY CONTENT Product always ready to use, terms of delivery

WILD Solarpower, fireplace, LED lighting and 12 volts electrical system with battery

URBAN 230V electrical system

ADDITIONAL ADVANTAGES Artistic, placement, glass solutions, shower rooms, interior materials, project design and implementation, groundwork and foundation service

SQUARE METER 10-20m²

WEIGHT 3 to 5 tonnes

PORTABILITY The portability of Chalet S must be moved

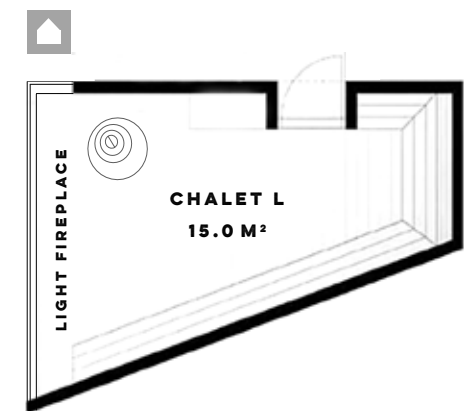


PINE CHALET **(L)**

The Chalet L is trapezoidal in shape, where space and light of the space are uniquely faced. When you are looking for peace or space for thought, create a new, unspoiled setting for Chalet.

Uses:

- *Summer kitchen*
- *Joogahuone*
- *Fireplace room*



COLORS Natural, pitch, gray, tar

SUPPLY CONTENT Product always ready to use, terms of delivery

WILD Solarelectricity, stove, LED lighting and 12 volt electric system with battery

URBAN 230V electrical system heating Facilities

ADDITIONAL ADVANTAGES Artistic, placement, glass solutions, shower rooms, interior materials, project design and implementation, ground works and basic services

SQUARE METER 15m²

WEIGHT about 6 tons

PORTABILITY The Chalet L is firmly in place

YEAR IN THE FORESTRY

The unhurried and off-grid environment helps us to look inward and pause for the essentials. What is amazing about the wonder of nature's own beauty is that it offers space to just be - simple and cleansing. It has been desired to build Pineart's living rooms for this very purpose.

Pineart's accommodation units are ideally suited to the travel experience due to their flexibility and portability. Because of its optimal size, the hut can be set up in the environment while respecting the natural landscape and, in such a way, that all the occupants of the hut can maintain their privacy.

Key features of all Pineart products are the natural pine surfaces, the facade weathered with age and the drawing of the environment into the interior through the large windows. The Pineart concept offers an unhurried experience of accommodation and recreational activities in the natural environment that are being taken to a whole new level.

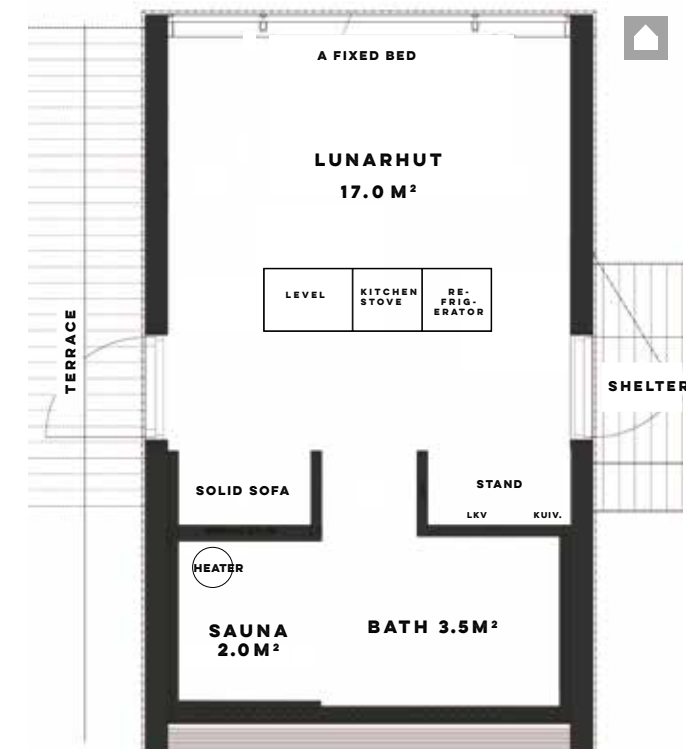




LUNARHUT

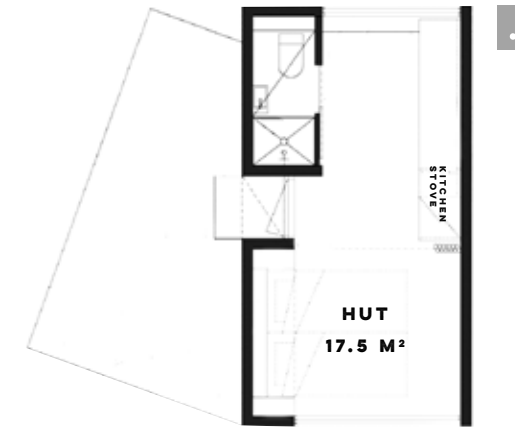
The Lunarhut is a full service accommodation unit with modular facilities for sleeping, cooking, bathing and bathing for up to six people. A solid building can be placed in many different locations under the landscape. Buildings can be connected in parallel for example as part of a holiday village. However, each accommodation unit retains its own peaceful view of nature and the sky through a large glass wall.

The accessory level can be customized as a hotel room or villa by purpose. The basic equipment includes high-quality lighting, mechanical ventilation, underfloor heating and washing facilities. Lunarhut's furniture is made of carpenter work, so they keep the building line beautifully. In addition to natural wood surfaces, beautiful concrete surfaces are available at the tents. Lunarhuts are not to be moved, but are built in their place.



PANORAMA DESIGN HUT

Panorama design Hut is an adventure lodge that provides space for relaxation and accommodation, up to Arctic conditions. The large panorama window of the landscape brings nature as close as possible. The beams are removable so they can be easily transported to a different environment according to seasonal variations, for example during the winter season near the skiing tracks, in the summer near the beach. The sleeping pad is designed for 2-4 people and is available on Urban and Wild equipment.



URBAN

The Urban-equipped guesthouse can offer hotel amenities as part of a natural construction product. The rooms have basic lighting, underfloor heating, as well as a mini kitchen, toilet and shower room. In addition to these, there are several different equipment available to your needs.

WILD

The Wild-Furnished Lodge has a good feeling of basic things; for quiet resting and rest in the fireplace's heat. This eruption of the wilderness conditions is purely primitive in an environment where technology is not needed.



PANORAMA DESIGN HUT



Rovaniemi Vaattung's Roof Garden is a pioneering adventure village with 20 adventure nights. One (17.5m²) guesthouse accommodates 2 people or a small family.



NATURAL
TOUCH OF
PURE PINE

BY PINEART PRODUCTION

PINESAUNA • PINECHALET • PINEHUT

CONTACT@PINEART.FI

+358 50 547 8707

WWW.PINEART.FI